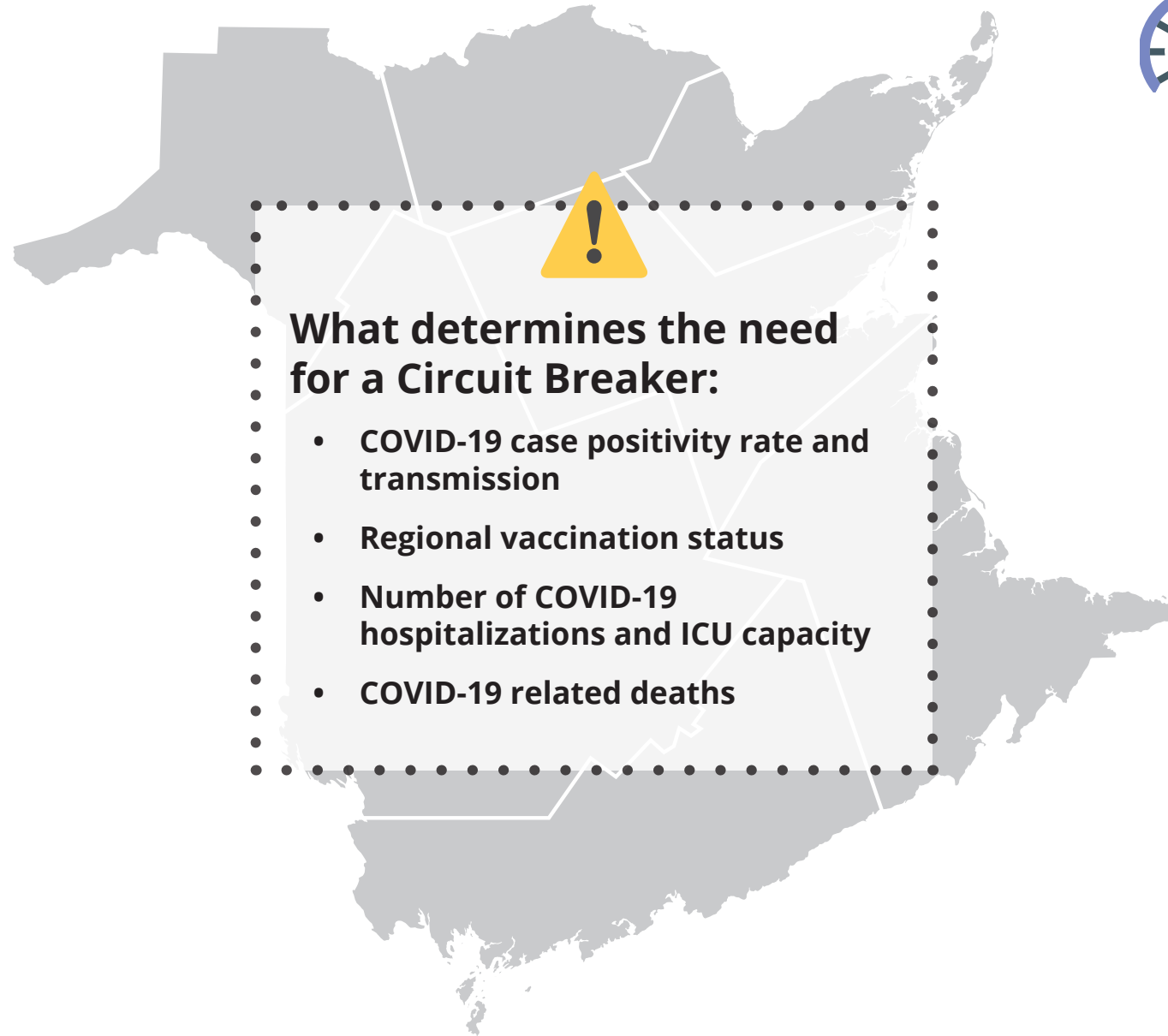


What is a COVID-19 Circuit Breaker?

Responding to rising COVID-19 cases, hospitalizations, ICU capacity, deaths, and vaccination uptake.



What determines the need for a Circuit Breaker:

- COVID-19 case positivity rate and transmission
- Regional vaccination status
- Number of COVID-19 hospitalizations and ICU capacity
- COVID-19 related deaths



Circuit Breaker

Public Health Measures and Mandatory Order remain in effect under Circuit Breaker restrictions:

- Masks, proof of full vaccination, travel registration, faith venues and physical distancing.

Households

- Private indoor or outdoor
 - Single household only
 - A single household includes individuals living together. It can be extended to include caregivers for any of those people, plus any parent, child, sibling, grandparent or grandchild of those people who requires support, plus any one additional person who lives alone at another address who requires support.
- **Businesses, events and services where proof of full vaccination with a government issued ID is required**
 Museums, cinemas, theatres, bingo halls, casinos, amusement centres, arenas, game rooms, pool halls, live entertainment venues, libraries, weddings, funerals, gyms, yoga studios, restaurants, bars and similar venues
 - At these venues, there are no restrictions on fully vaccinated people gathering, except the need to wear a mask indoors except while eating or drinking.

Travel

- Travel to or from Circuit Breaker regions is restricted, except for those who must travel including for work, health services, child custody, childcare or post-secondary education or travel to and from places where proof of full vaccination is required.

Schools

- Schools remain open in Circuit Breaker regions unless advised by Public Health.
- School sports and extra-curricular activities will be paused for those 12 and under.

Businesses, services and events that do not require proof of full vaccination

Retail, grocery, pharmacy, private business, etc.

- Can remain open but must follow Mandatory Order measures.

Circuit Breaker remains in effect for 14 days.